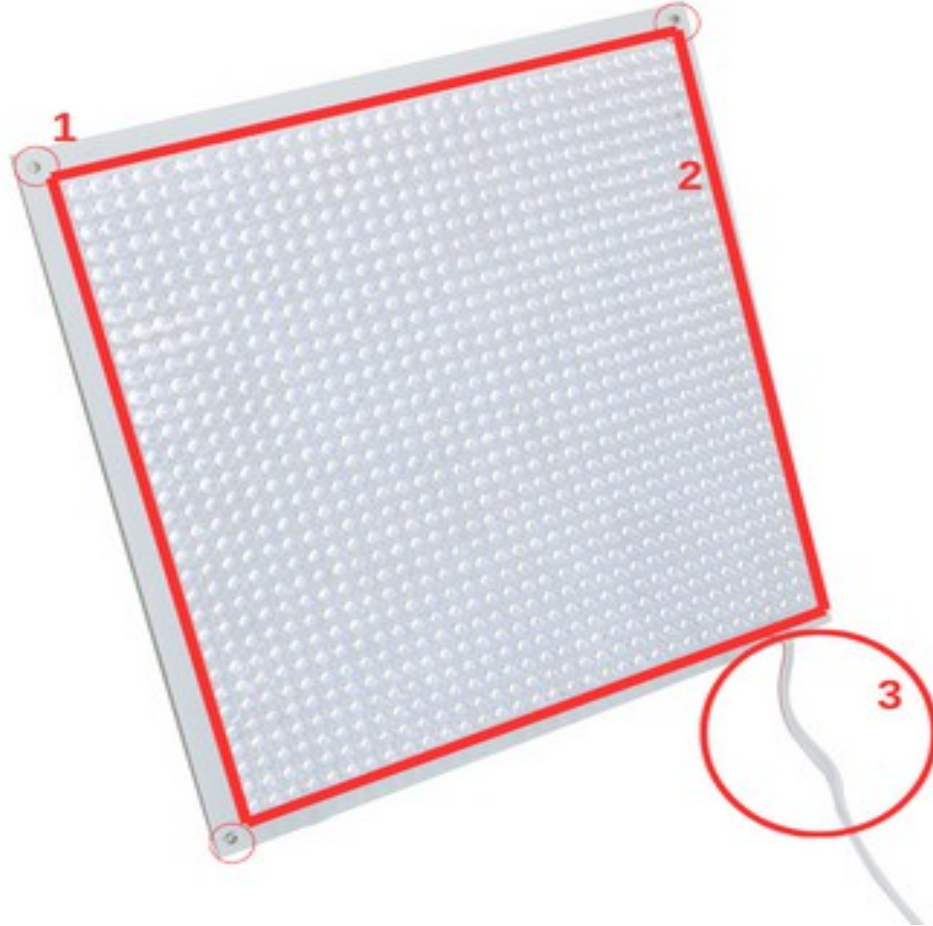




# Prion Industrial Lighting

## Back Light

L3232



Product Name	Dimensions	Number	Statement
L3232	Widht: 225 mm	1	Connection Hole
	Heigh: 25 mm	2	Lighting Zone
	Lenght: 225 mm	3	Product Cable





# Prion Industrial Lighting

## Back Light

L3232

### 1.FEATURES

- Lighting Color: 6000K, Green, Red
- Lighting Angle: 30°, 60°
- Intensity Of Illumination: 2,56 k lm
- Led Number: 1024
- Input Voltage: 24 V
- Input Current (15  $\mu$ s): 3,2 A
- Input Current (1 second): 2 A
- Input Current (1 minute): 1,66 A
- Input Current (continuous): 1,28 A
- Dimensions: 22,5 cm x 22,5 cm x 2,5 cm
- At Constant Voltage Operation: Have
- Diffusor Option: There Are

### 3.APPLICATIONS

- Engine Part Inspections
- Packaging Inspections
- Medical Bottle Inspections
- Food Package Inspections
- Surface Inspections
- Microscopic Camera Applications
- Particle Imaging in Liquid
- Particle Size Measurement
- Particle Counting
- Machine Vision
- Cell Identification
- Flame Length Measurement
- Edge Detection
- Material Strain Measurement (elongation / shortening / degradation)
- Motion Detection
- Product Counting
- Color Concentration Information
- Coordinate Information

### 2.DESCRPTIONS

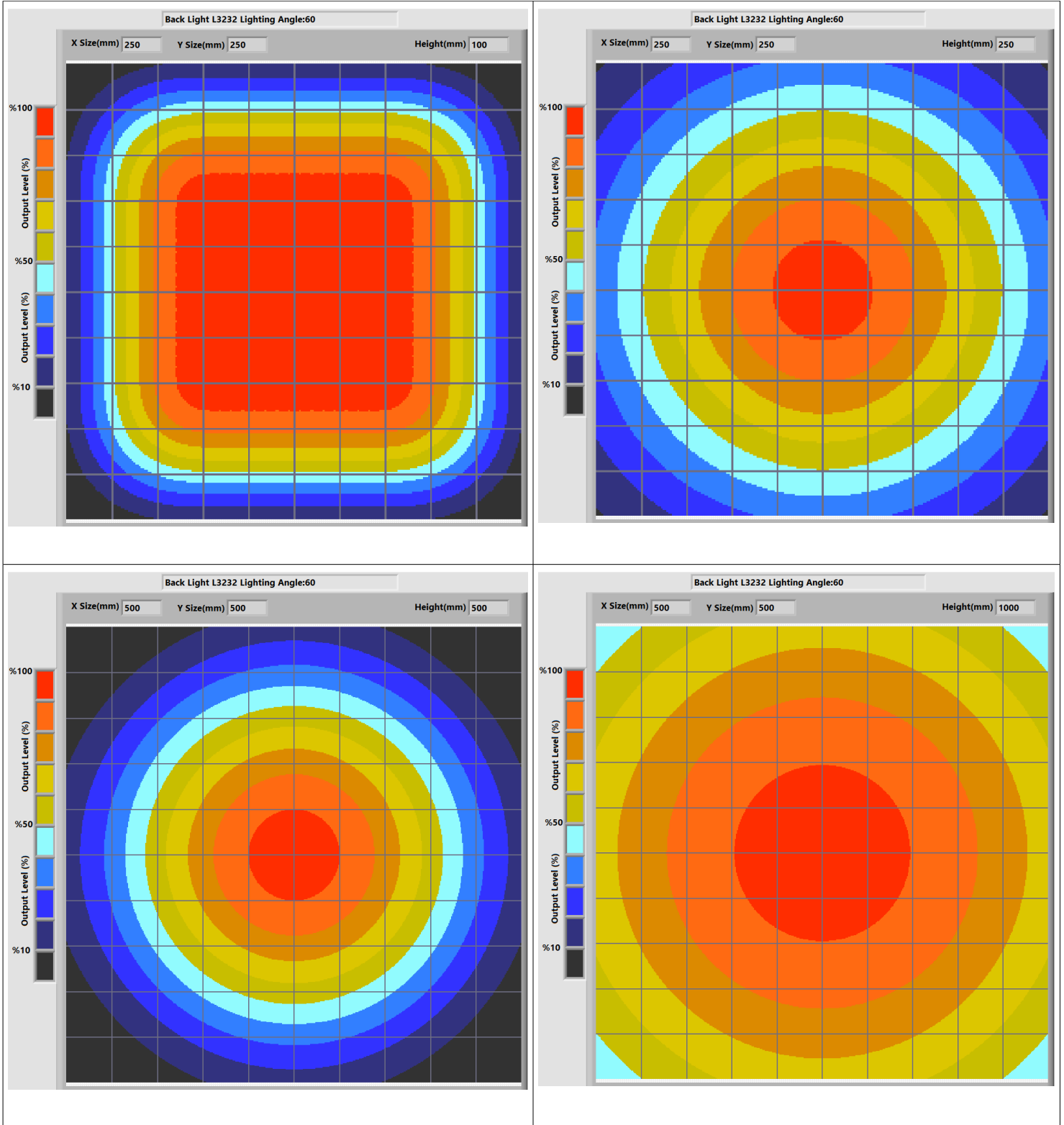
- Backlight lightings include various options suitable for projects with different angles and color options. It is used in all areas where there is a camera and used in the field of artificial image processing. however, it is preferred in machine lighting and used in special machine lighting.

- Particle Identification
- Cell Imaging
- Machine Monitoring
- Image Processing
- Industrial Led Lighting
- Conveyor Line Lighting
- Robot Vision Applications
- Industry 4.0 Applications
- Machine Lighting
- Bar Light
- Dark Field Light
- Panel Lighting
- Dark Effect Lighting
- Dome Light
- Ring Light
- Panel Light
- Back Light
- Dome Type
- Lighting





### 4.LIGHT CHARACTERISTICS

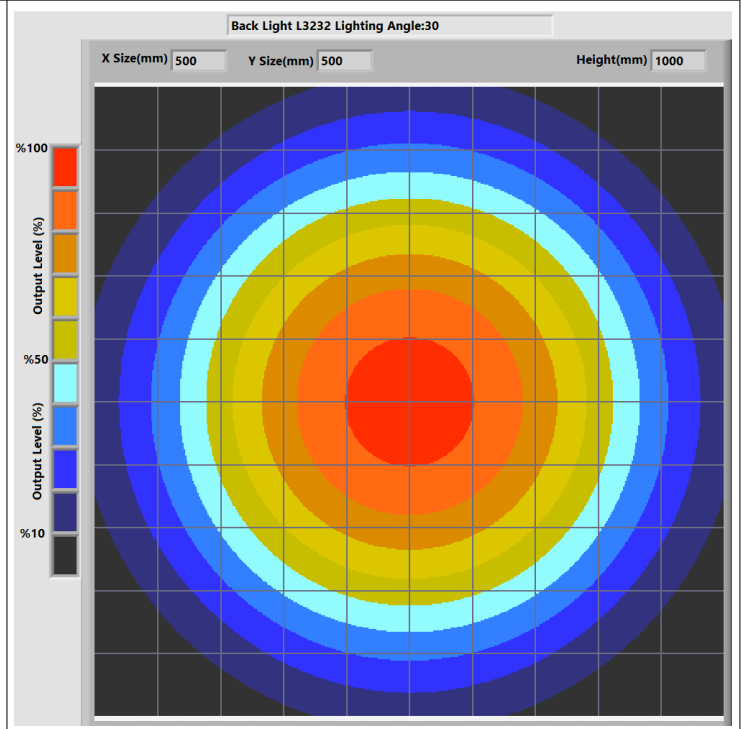
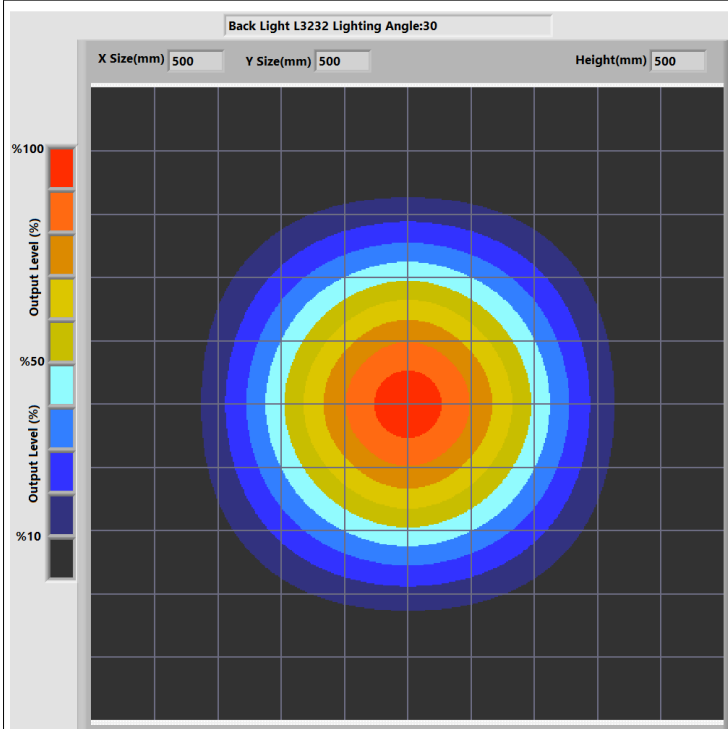
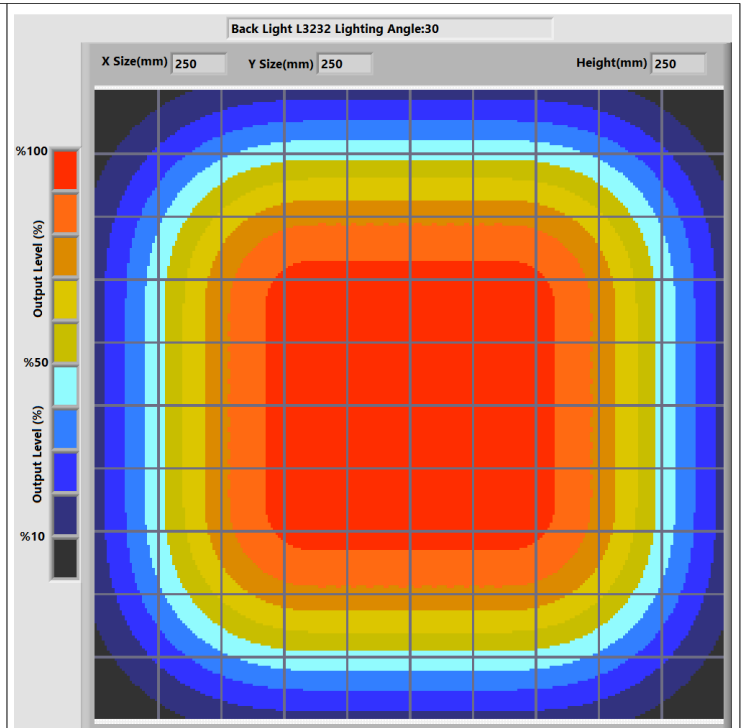
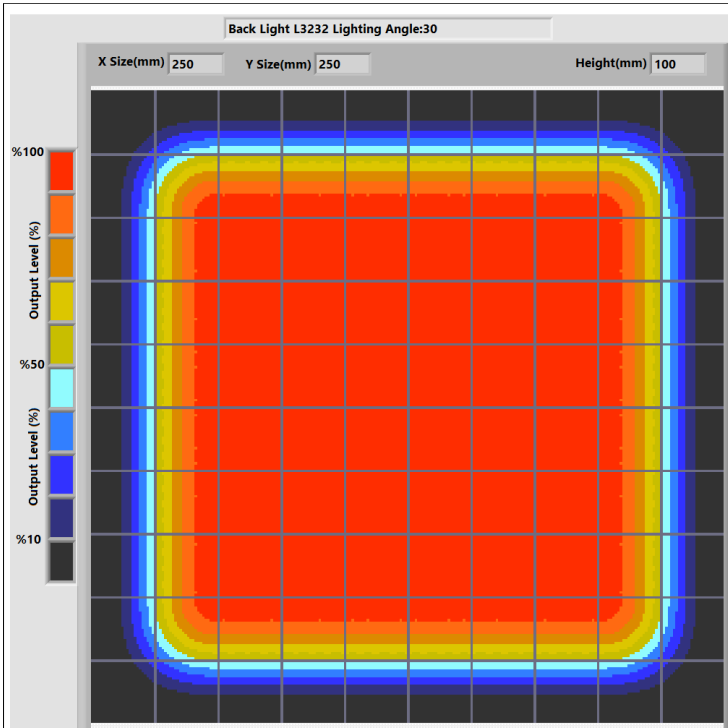




# Prion Industrial Lighting

## Back Light

### L3232



Pelin Street, Nuhoglu Stage 2  
Kadiköy/İstanbul/Turkey

E-Mail: [info@ludre.com.tr](mailto:info@ludre.com.tr)  
Contact: +90 216 519 08 54



# Prion Industrial Lighting

## Back Light

L3232

Lens:12mm

Bolt



Camera h:170mm

Light h:0mm

Lens:12mm

Cap



Camera h:170mm

Light h:0mm

Lens:12mm

Nut



Camera h:170mm

Light h:0mm

Lens:12mm

Broken Glass



Camera h:170mm



Light h:0mm



Pelin Street, Nuhoglu Stage 2  
Kadiköy/İstanbul/Turkey

E-Mail: [info@ludre.com.tr](mailto:info@ludre.com.tr)  
Contact: +90 216 519 08 54

### 5.PRODUCT USE

	<p>Mounting to the machines is possible with the bolt and nut assembly in the areas indicated in the adjacent image.</p> <p>The points to be taken into consideration during this installation are as follows: The electronic parts should not be contacted while assembling the product.</p> <p>In addition, if the product is not installed properly, vibrations that may occur will cause errors during measurement and control.</p>
	<p>The product is powered by a 2M long cable fixed on it.</p> <p>We need to make the 24V DC+ connection from our cable line with a red stripe, and we need to make the GND connection from our single color cable line.</p> <p>When the supplies are connected in reverse, the product will not be damaged, but the product will not work. Cuts, breaks, etc. on the cable. If there is a problem, please contact us before using the product.</p>



### 6.DIMENSIONS

