



# Prion Industrial Lighting

## Bar Lights



Product Name	Dimensions	Number	Statement
Bar Light	Widht: 400-3700mm	1	Connection Hole
	Heigh: 55 mm	2	Lighting Zone
	Lenght: 55mm		





# Prion Industrial Lighting

## Bar Lights

### 1.FEATURES

- Lighting Color: 4000K - 6000K
- Lighting Angle: 5°, 15°, 30°, 45°, 60°
- Intensity Of Illumination: 2,88 k lm - 34,56 k lm
- Led Number: 12 – 144
- Input Voltage: 24 V
- Input Current (15  $\mu$ s): 4 Amp – 48 Amp
- Input Current (1 second): 3 Amp – 32 Amp
- Input Current (1 minute): 2 Amp – 24 Amp
- Input Current (continuous): 0,7 Amp – 8,4 Amp
- Dimensions: 40 cm x 5 cm x 5,5 cm – 370 cm x 5,5 cm – 5,5 cm
- At Constant Voltage Operation: Have
- Diffusor Option: Have

### 3.APPLICATIONS

- Engine Part Inspections
- Packaging Inspections
- Medical Bottle Inspections
- Food Package Inspections
- Surface Inspections
- Microscopic Camera Applications
- Particle Imaging in Liquid
- Particle Size Measurement
- Particle Counting
- Machine Vision
- Cell Identification
- Flame Length Measurement
- Edge Detection
- Material Strain Measurement (elongation / shortening / degradation)
- Motion Detection
- Product Counting
- Color Concentration Information
- Coordinate Information

### 2.DESCRPTIONS

- Bar lighting is a commonly used illumination method in image processing projects. This method involves the use of a linear light source in the form of a bar and offers various advantages.

- Particle Identification
- Cell Imaging
- Machine Monitoring
- Image Processing
- Industrial Led Lighting
- Conveyor Line Lighting
- Robot Vision Applications
- Industry 4.0 Applications
- Machine Lighting
- Bar Light
- Dark Field Light
- Panel Lighting
- Dark Effect Lighting
- Dome Light
- Ring Light
- Panel Light
- Back Light
- Dome Type
- Lighting

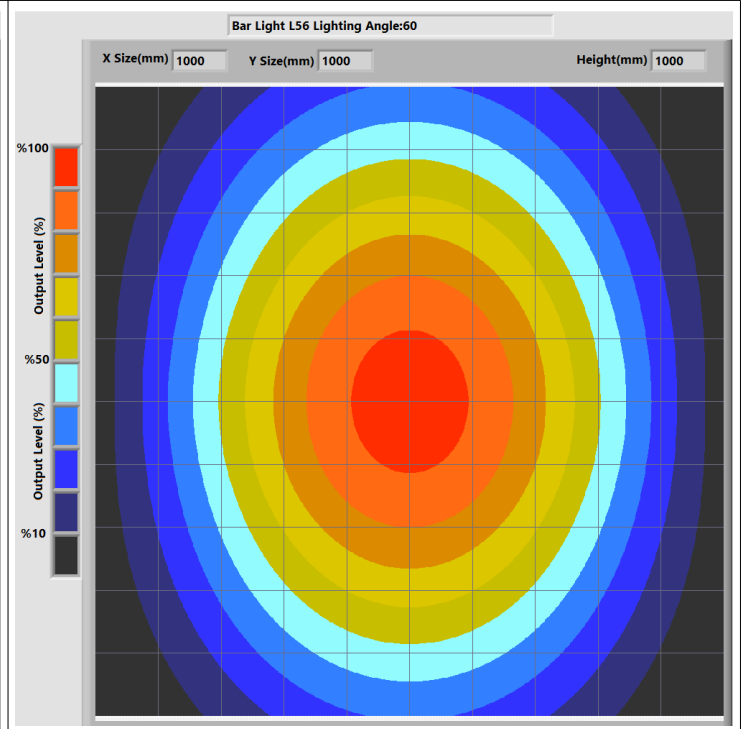
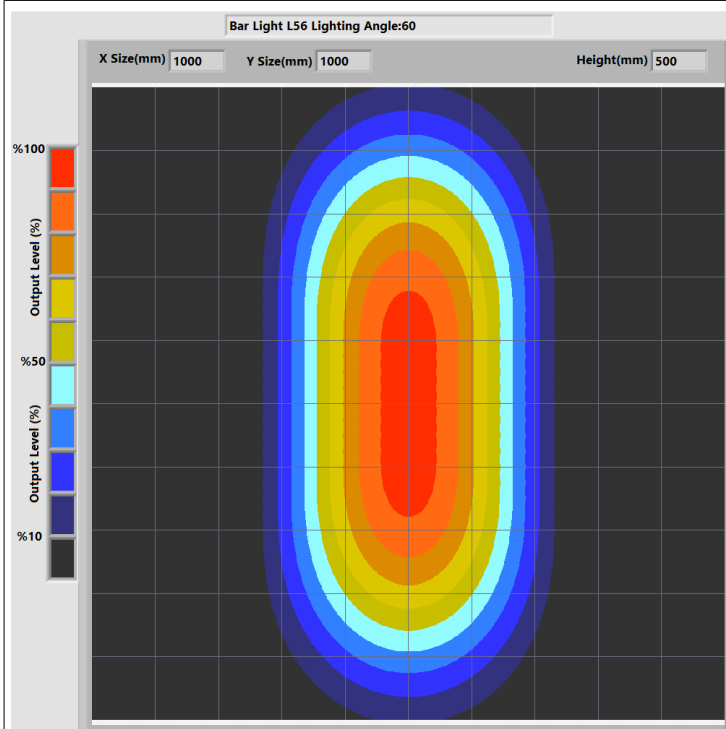
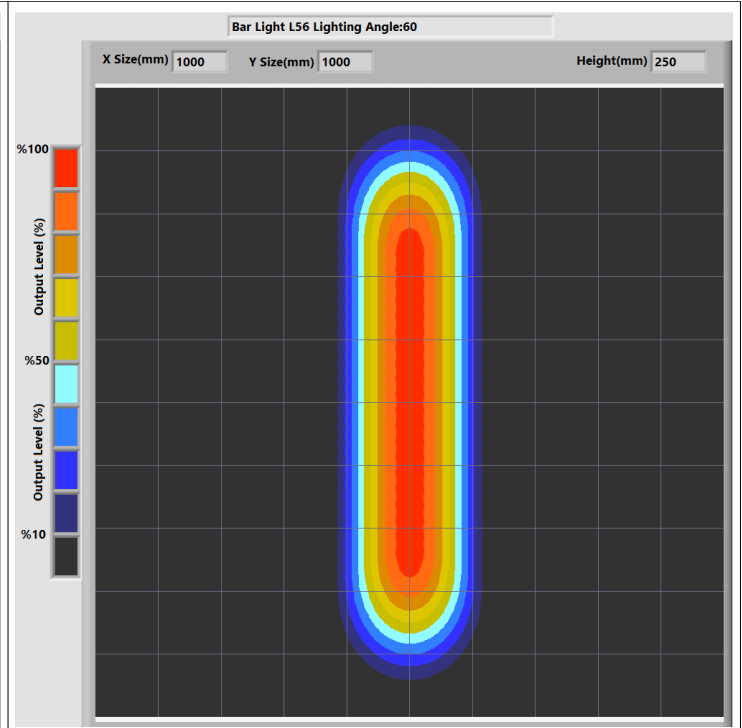
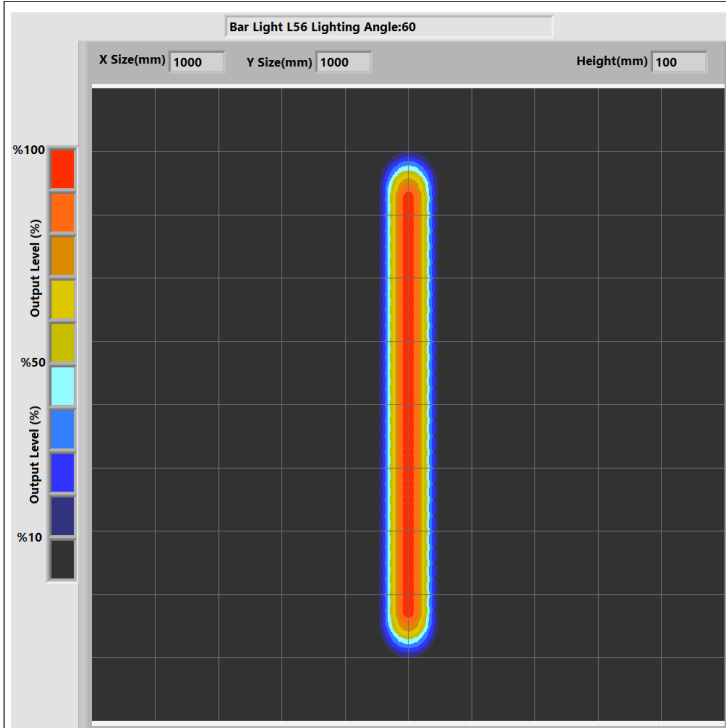




# Prion Industrial Lighting

## Bar Lights

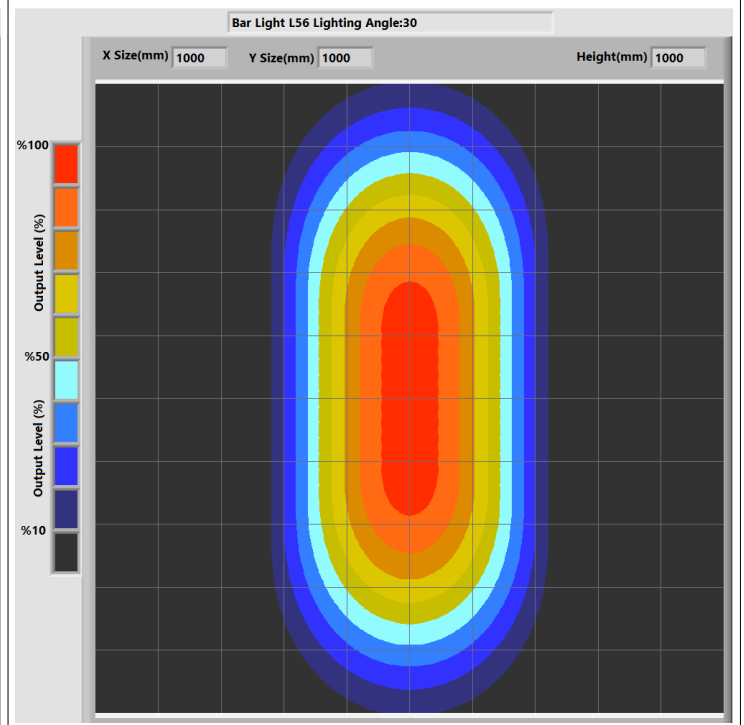
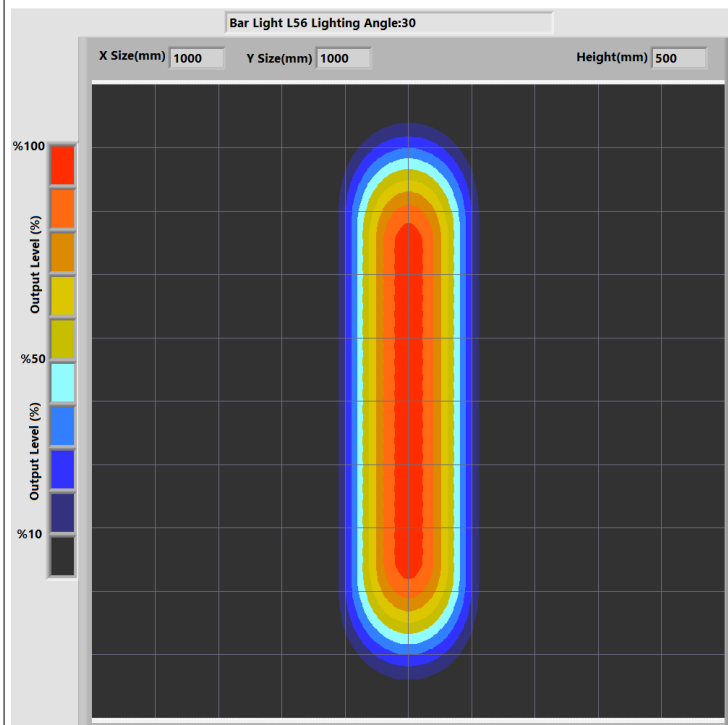
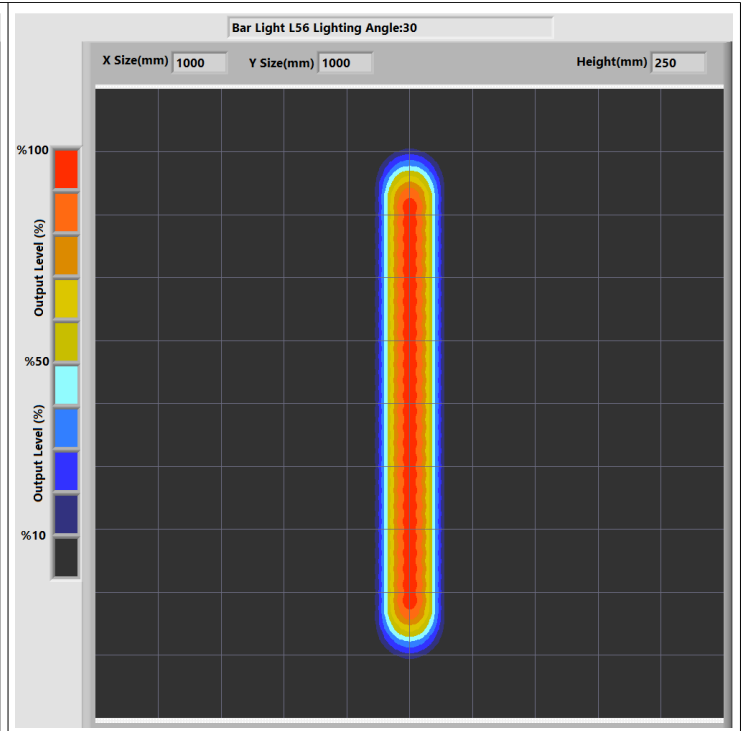
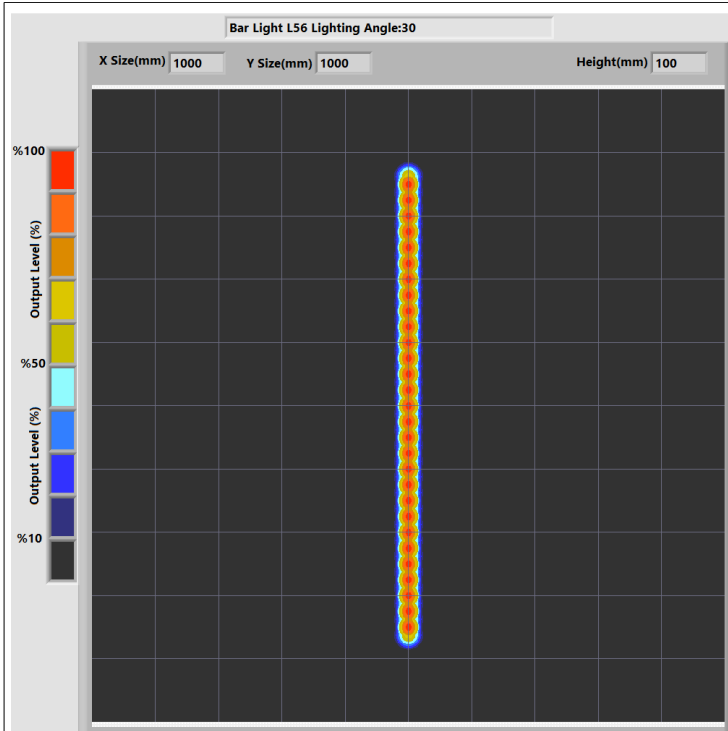
### 4.LIGHT CHARACTERISTICS





# Prion Industrial Lighting

## Bar Lights



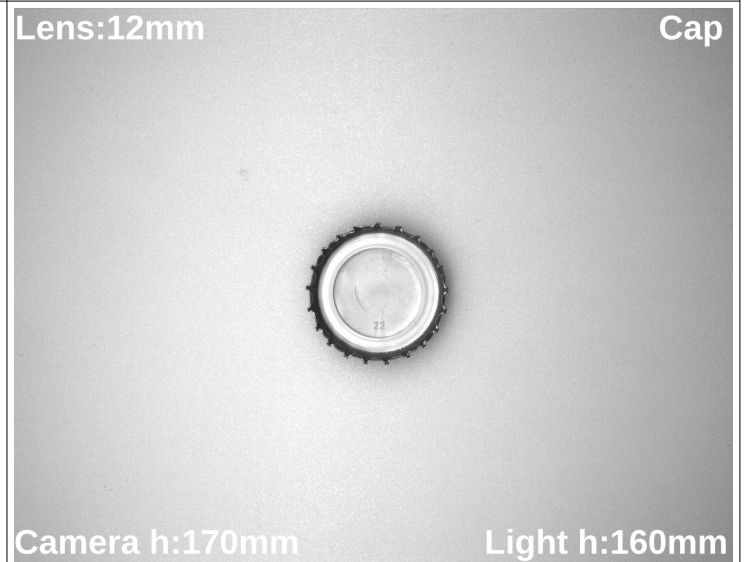
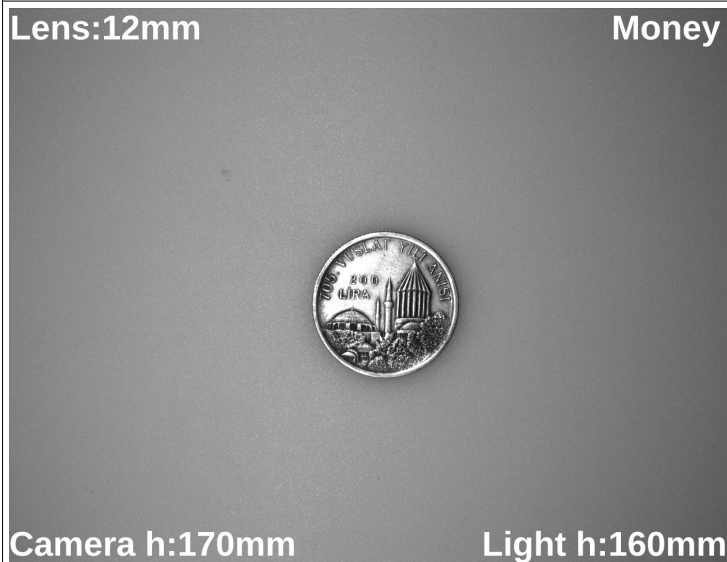
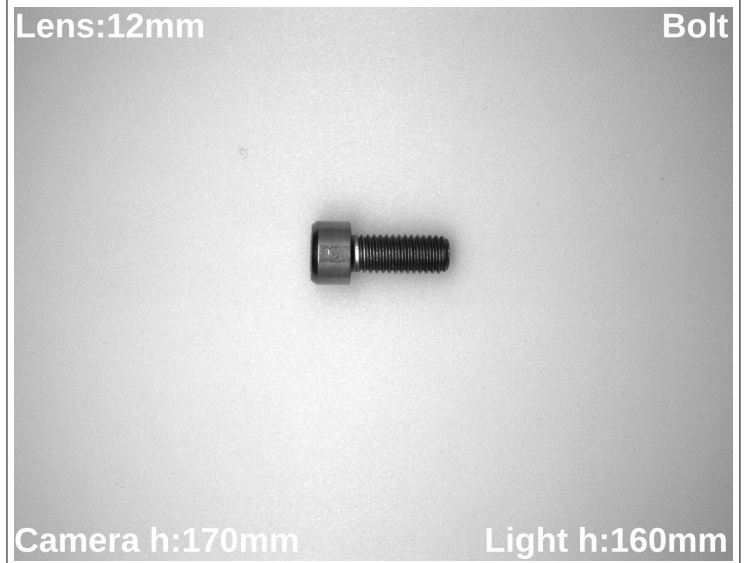
Pelin Street, Nuhoglu Stage 2  
Kadiköy/İstanbul/Turkey

E-Mail: [info@ludre.com.tr](mailto:info@ludre.com.tr)  
Contact: +90 216 519 08 54



# Prion Industrial Lighting

## Bar Lights





# Prion Industrial Lighting

## Bar Lights

Lens:12mm

Can



Camera h:230mm

Light h:160mm

Lens:12mm

Cap



Camera h:230mm

Light h:160mm

Lens:12mm

Toy

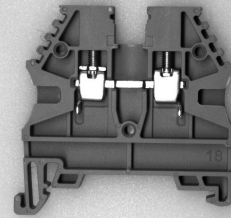


Camera h:230mm

Light h:160mm

Lens:12mm

Terminal



Camera h:170mm

Light h:160mm



Pelin Street, Nuhoglu Stage 2  
Kadikoy/Istanbul/Turkey

E-Mail: [info@ludre.com.tr](mailto:info@ludre.com.tr)  
Contact: +90 216 519 08 54

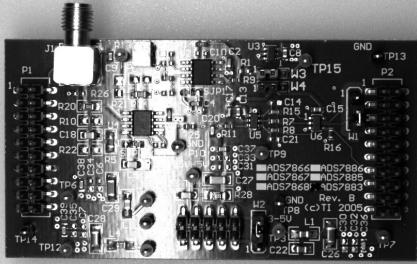


# Prion Industrial Lighting

## Bar Lights

Lens:12mm

Pcb

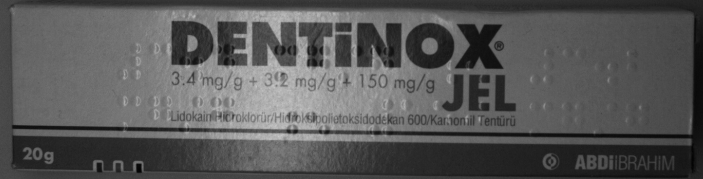


Camera h:230mm

Light h:160mm

Lens:12mm

Box



Camera h:230mm

Light h:160mm

Lens:12mm

Package



Camera h:170mm

Light h:160mm

Lens:12mm

Package



Camera h:230mm

Light h:160mm



Pelin Street, Nuhoglu Stage 2  
Kadikoy/Istanbul/Turkey

E-Mail: [info@ludre.com.tr](mailto:info@ludre.com.tr)  
Contact: +90 216 519 08 54



# Prion Industrial Lighting

## Bar Lights

### 5.PRODUCT USE



Mounting to the machines is possible with the bolt and nut assembly in the areas indicated in the adjacent image. The points to be taken into consideration during this installation are as follows: The electronic parts should not be contacted while assembling the product. In addition, if the product is not installed properly, vibrations that may occur will cause errors during measurement and control.



The product is powered by a 2M long cable fixed on it. We need to make the 24V DC+ connection from our cable line with a red stripe, and we need to make the GND connection from our single color cable line. When the supplies are connected in reverse, the product will not be damaged, but the product will not work. Cuts, breaks, etc. on the cable. If there is a problem, please contact us before using the product.

