



Product Name	Dimensions
113-30	R min:103 mm
	Rmax:148 mm
	Heigh:30 mm



# Prion Lighting

## Photometric Stereo Light

DFL 113-30

### 1.FEATURES

- Lighting Color: Green , White
- Lighting Angle: 25°
- Lighting Tilt: 30°
- Led Number: 252
- Input Voltage: 24 V
- Input Current (15  $\mu$ s) : 0,52 A
- Input Current (1 second): 0,33 A
- Input Current (1 minute): 0,28 Amp
- Input Current (continuous): 0,21Amp
- Dimensions: Rmin 103 mm x Rmax 148 mm x h=30 mm
- At Constant Voltage Operation: Have
- Diffusor Option: No

### 3.APPLICATIONS

- Engine Part Inspections
- Packaging Inspections
- Medical Bottle Inspections
- Food Package Inspections
- Surface Inspections
- Microscopic Camera Applications
- Particle Imaging in Liquid
- Particle Size Measurement
- Particle Counting
- Machine Vision
- Cell Identification
- Flame Length Measurement
- Edge Detection
- Material Strain Measurement (elongation / shortening / degradation)
- Motion Detection
- Product Counting
- Color Concentration Information
- Coordinate Information

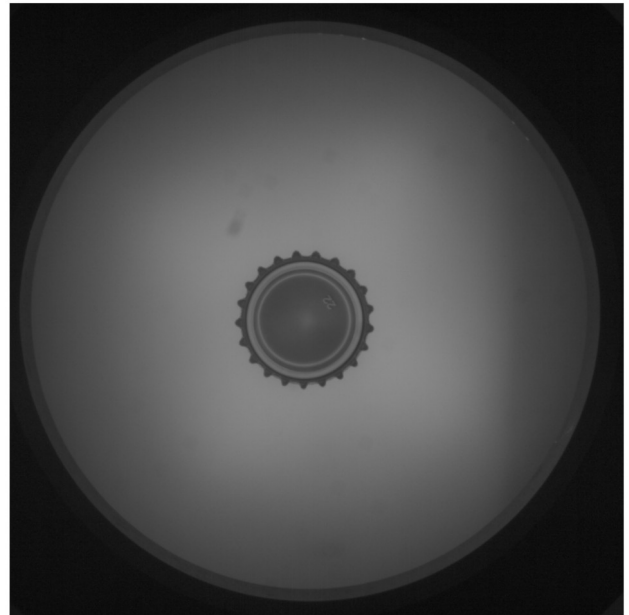
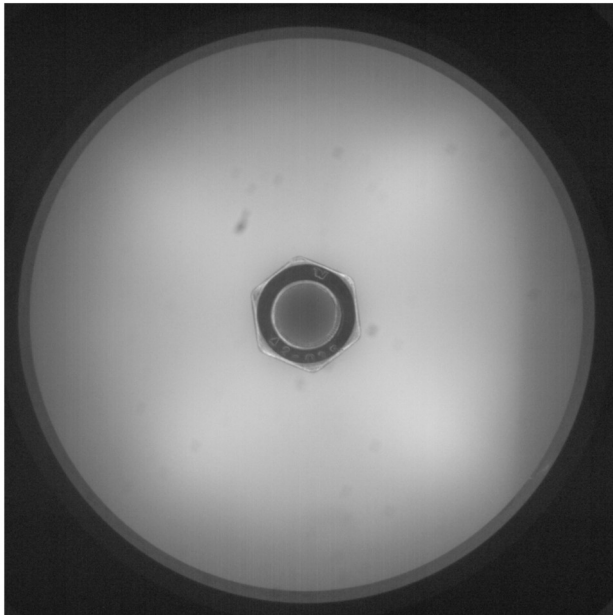
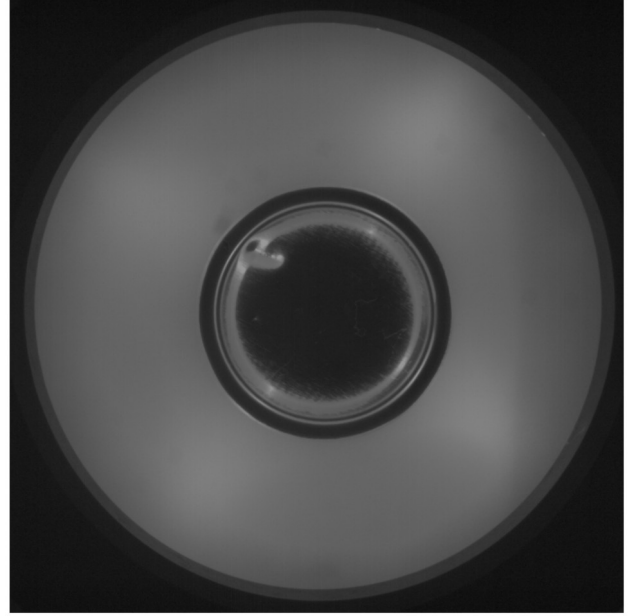
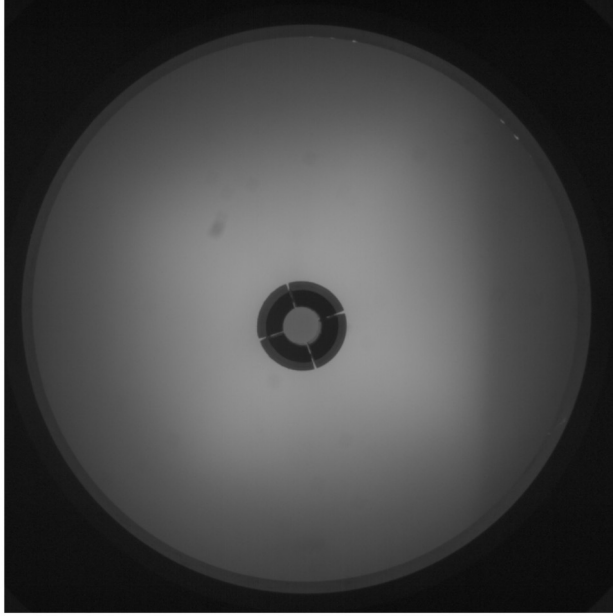
### 2.DESCRPTIONS

- Photometric Stereo Lighting systems are designed specifically for machine vision applications requiring high-precision surface inspection. Unlike traditional backlight systems, stereo lighting provides directional illumination from multiple angles, enabling accurate 3D shape and texture analysis through shading variations.

- Particle Identification
- Cell Imaging
- Machine Monitoring
- Image Processing
- Industrial Led Lighting
- Conveyor Line Lighting
- Robot Vision Applications
- Industry 4.0 Applications
- Machine Lighting
- Bar Light
- Dark Field Light
- Panel Lighting
- Dark Effect Lighting
- Dome Light
- Ring Light
- Panel Light
- Back Light
- Dome Type
- Lighting



## 4.LIGHT CHARACTERISTICS

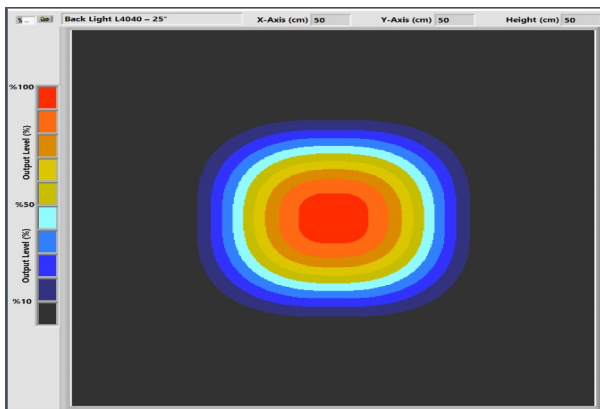
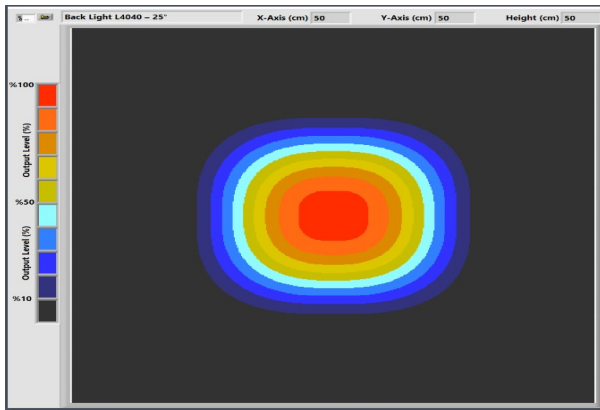
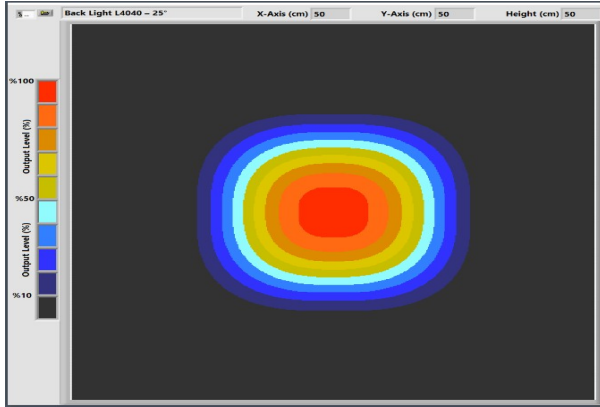




# Prion Lighting

## Photometric Stereo Light

DFL 113-30



Pelin Street, Nuhoglu Stage 2  
Kadıköy/İstanbul/Turkey

E-Mail: [info@ludre.com.tr](mailto:info@ludre.com.tr)  
Contact: +90 216 519 08 54



#### 5.PRODUCT USE



Mounting to the machines is possible with the bolt and nut assembly in the areas indicated in the adjacent image.

The points to be taken into consideration during this installation are as follows: The electronic parts should not be contacted while assembling the product.

In addition, if the product is not installed properly, vibrations that may occur will cause errors during measurement and control.



The product is powered by a 2M long cable fixed on it.

We need to make the 24V DC+ connection from our cable line with a red stripe, and we need to make the GND connection from our single color cable line.

When the supplies are connected in reverse, the product will not be damaged, but the product will not work. Cuts, breaks, etc. on the cable. If there is a problem, please contact us before using the product.

#### 6.DIMENSIONS

